

DOVE PRENDIAMO L'ACQUA?

Acque superficiali



Acque sotterranee

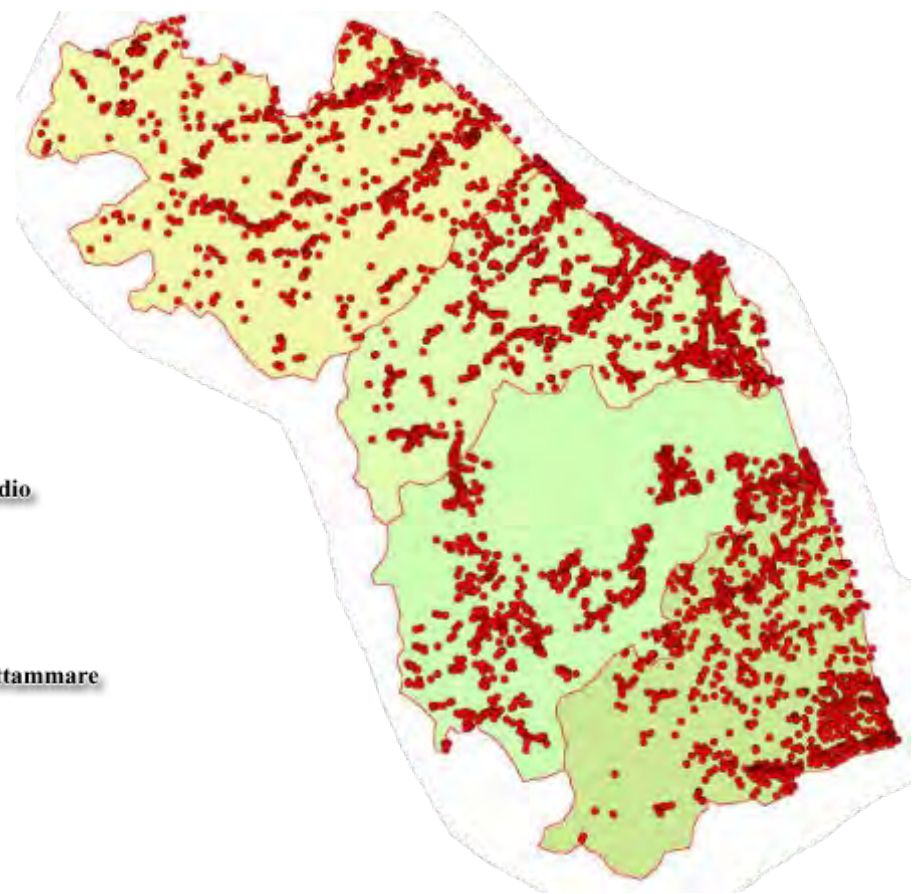
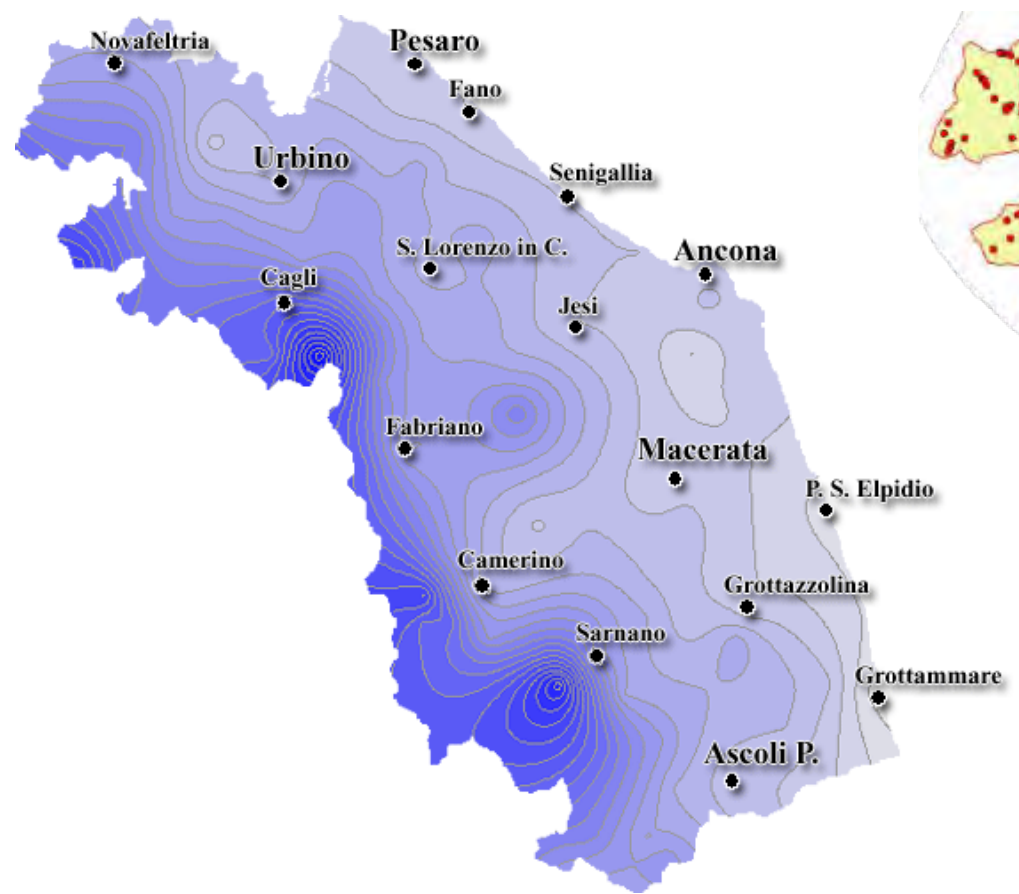




UN PO' DI NUMERI....



IL PROBLEMA DELLA DISTRIBUZIONE (ACQUEDOTTI)



LE ACQUE SUPERFICIALI



Costi per la depurazione

**Problematiche legate all'ecologia
dei corsi d'acqua (DMV)**

Formazione di alghe

Problematiche di interrimento

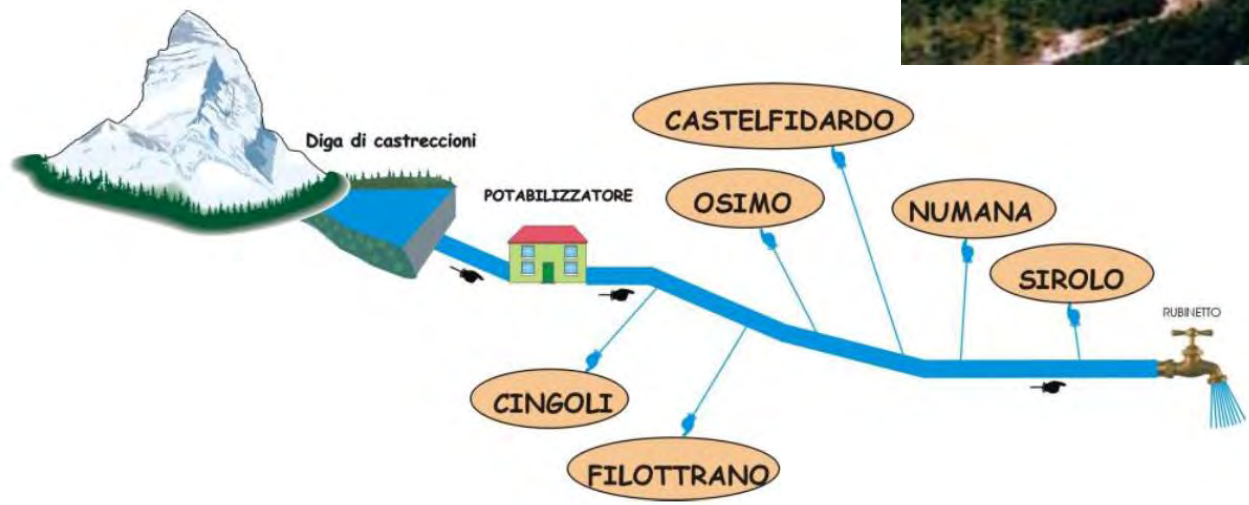
**Valutazione delle
pericolosità geomorfologiche**

L'INVASO DI CASTRECCIONI (CINGOLI-MC)

3 Mm³/anno x scopi irrigui
7 Mm³/anno x scopi idropotabili



65,000 abitanti/estate
96,000 abitanti/inverno



LE ACQUE SOTTERRANEE



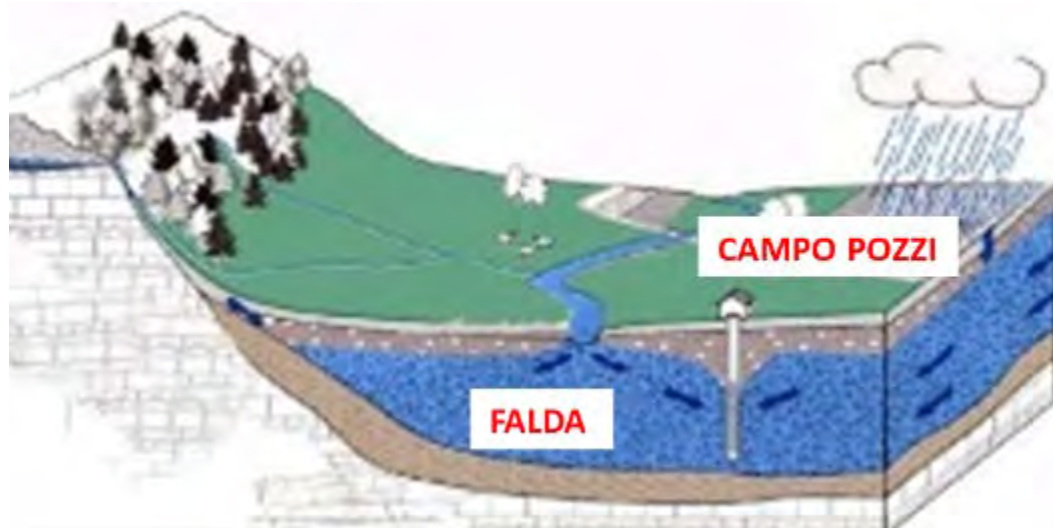
Sorgenti



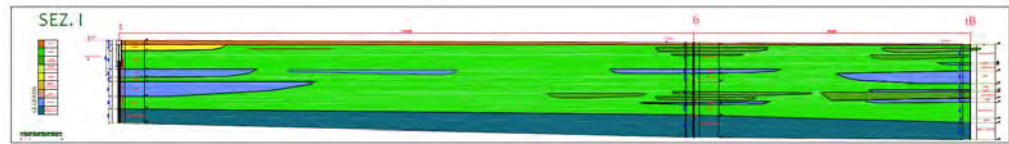
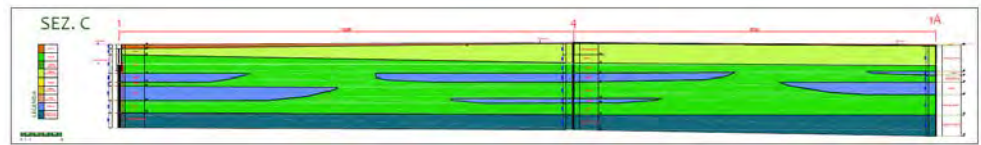
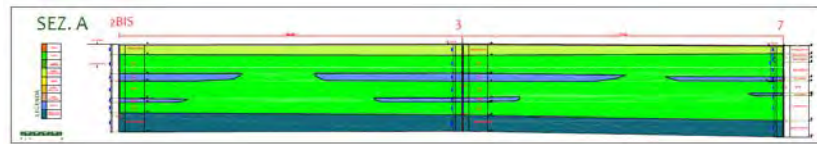
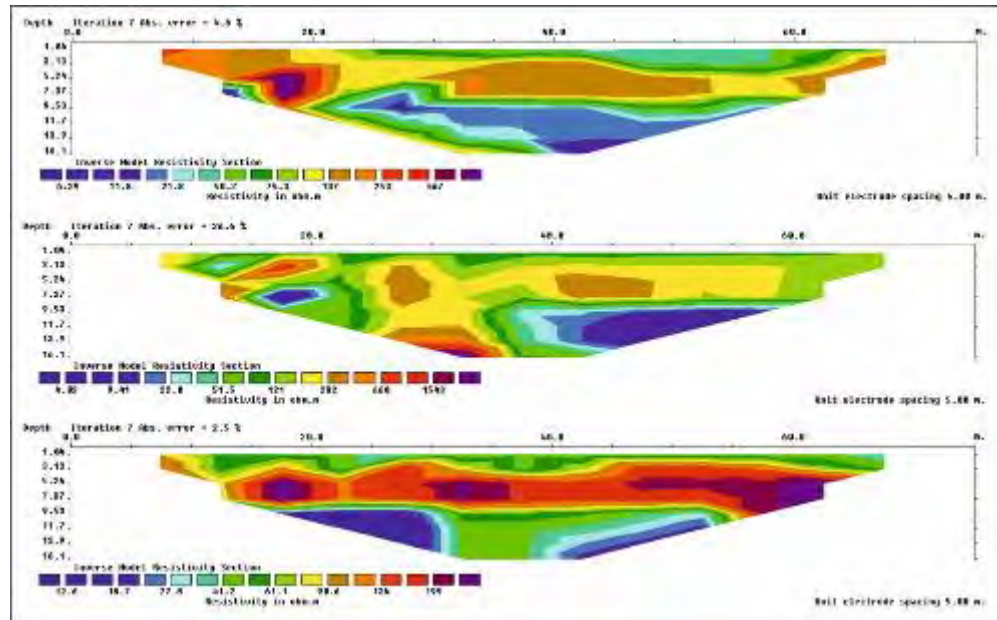
Campi Pozzi



I CAMPI POZZI



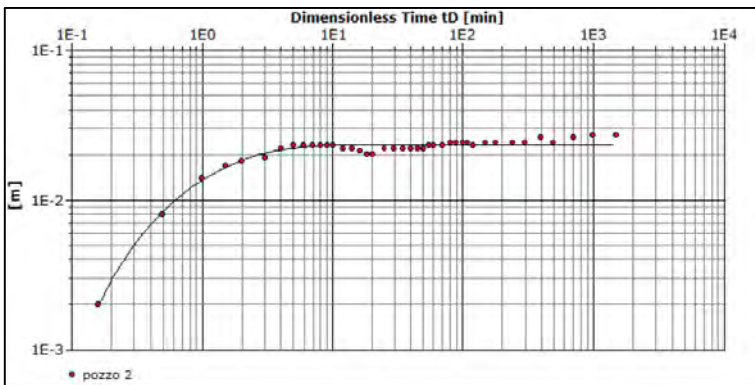
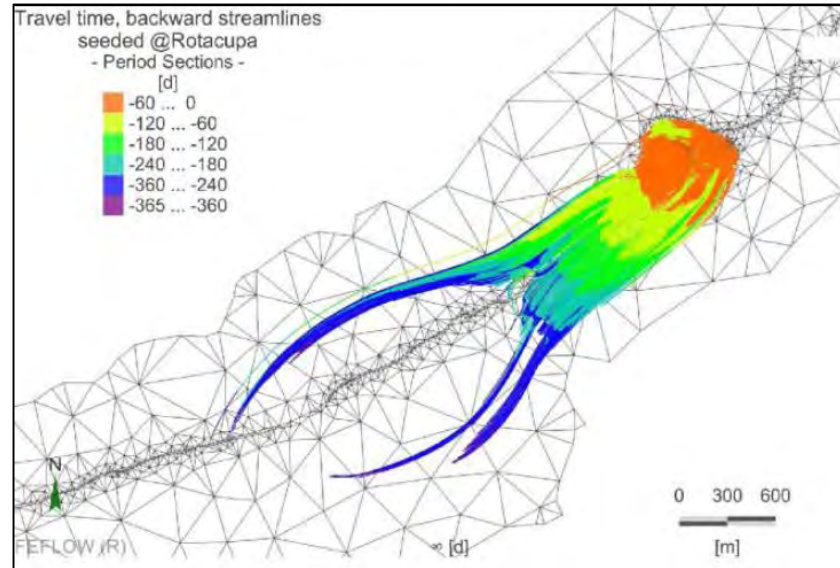
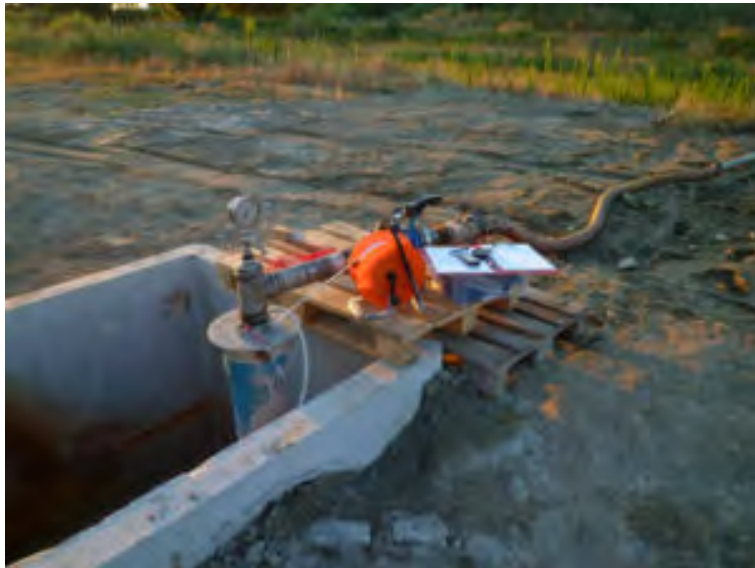
COME SI STUDIANO ?





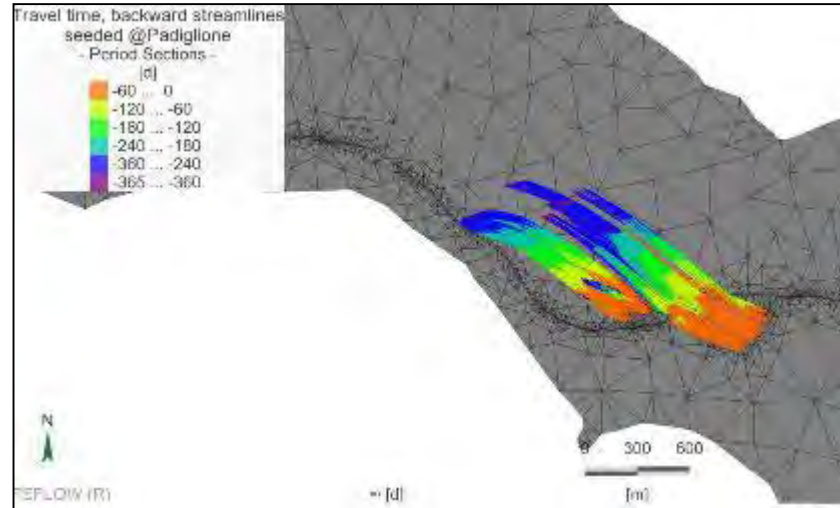
COME SI STUDIANO ?



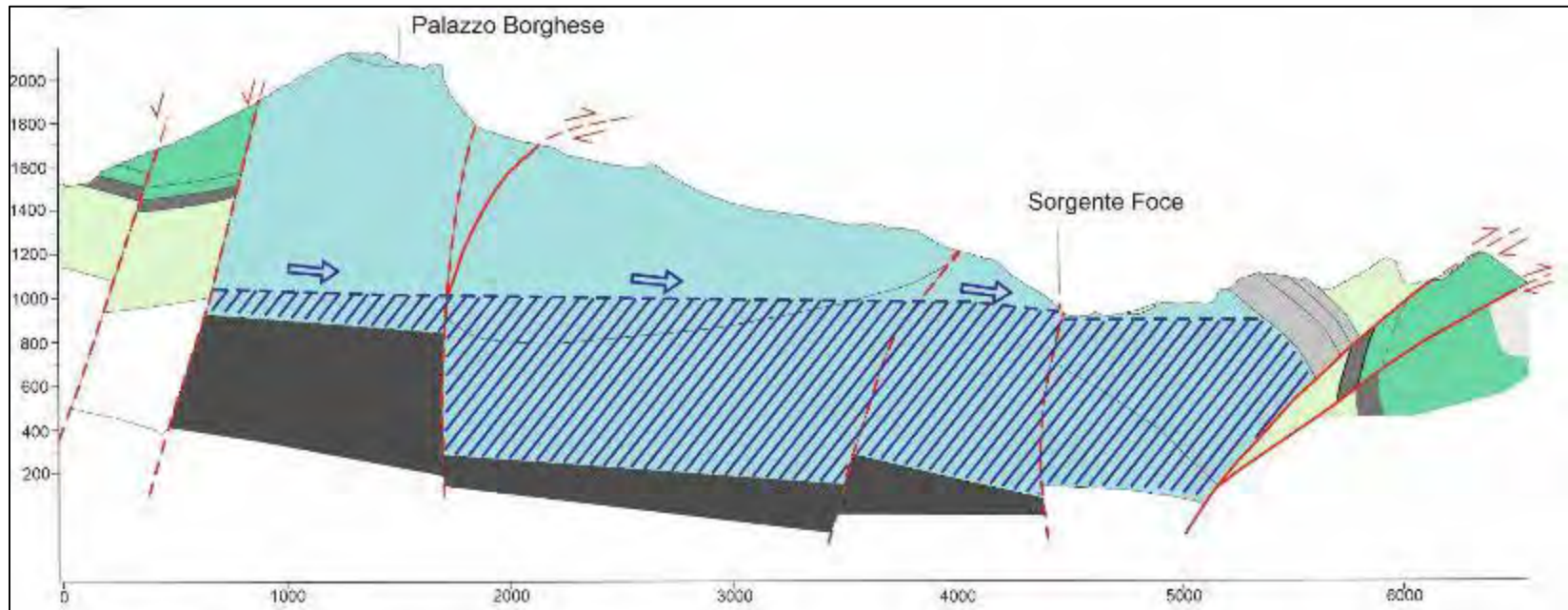
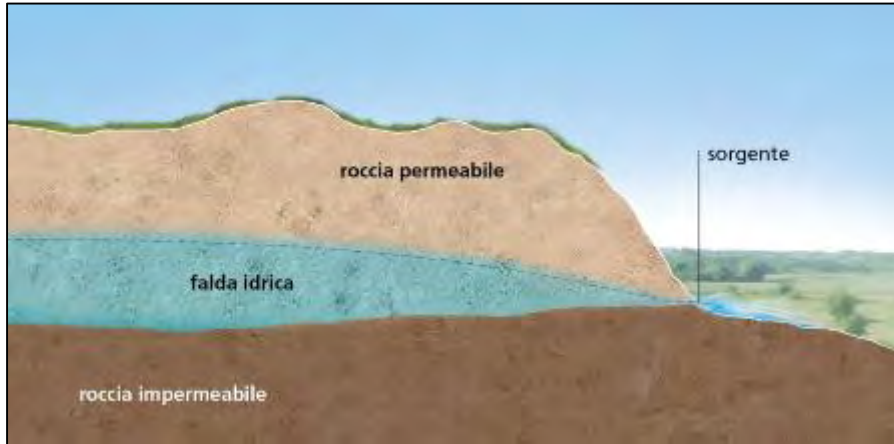


Calculation using Hantush

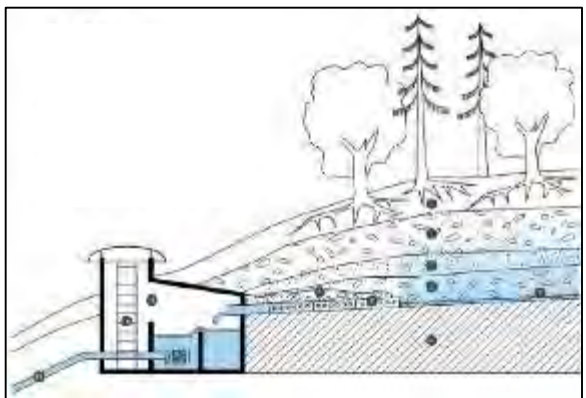
Observation Well	Transmissivity	Hydraulic Conductivity	Storage coefficient	Ratio K(y)/K(h)	Hydr. resistance	Leakage factor	Radii Distance to PW
	[m ² /s]	[m/s]			[min]	[m]	[m]
pozzo 2	1.56×10^{-1}	7.44×10^{-2}	8.77×10^{-4}	1.96×10^{-1}	3.65×10^2	185.001334354	38044

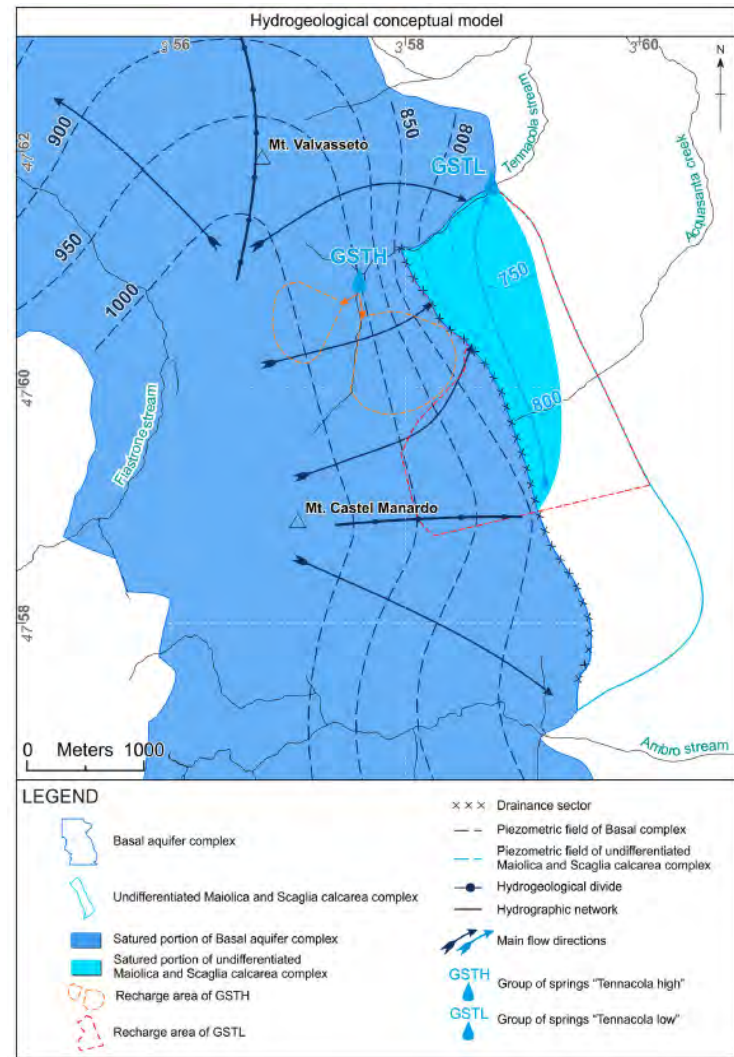
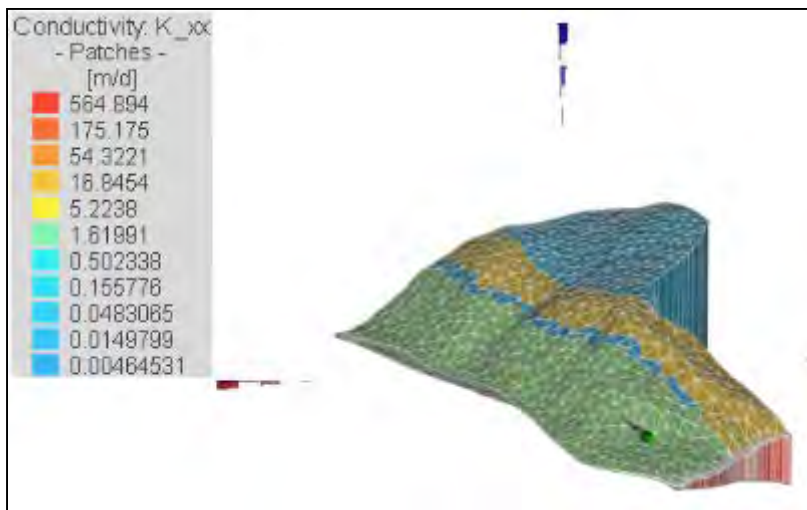
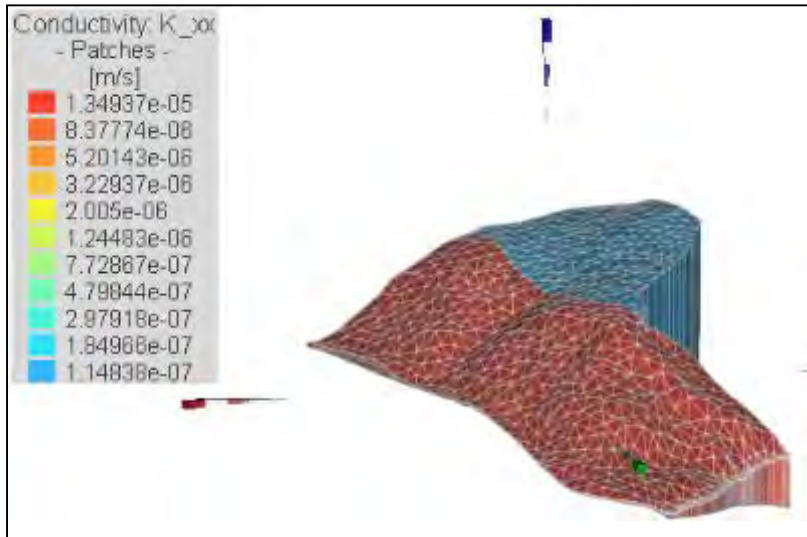


LE SORGENTI



LE OPERE DI PRESA DELLE SORGENTI





MA QUESTE RISORSE SONO A RISCHIO ?

Inquinamento

(Acque superficiali e Campi Pozzi)

Eccessivo consumo

(Tutte le risorse)

Cambiamento climatico

(Tutte le risorse)

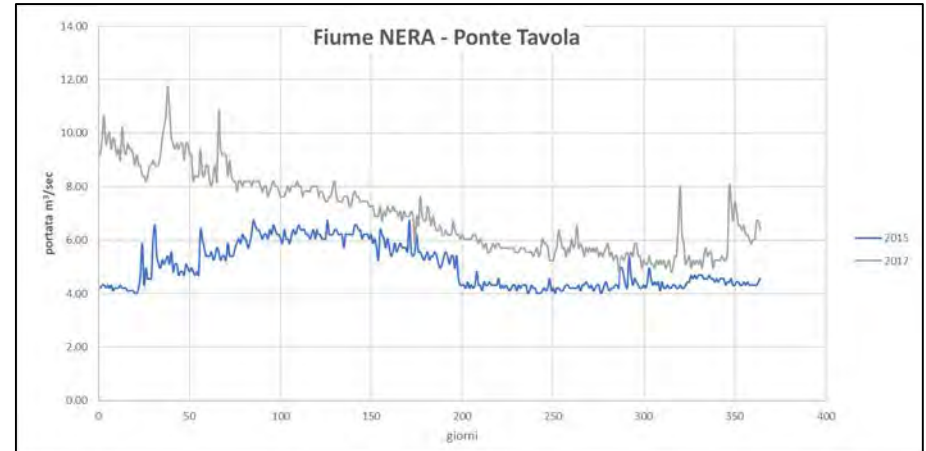
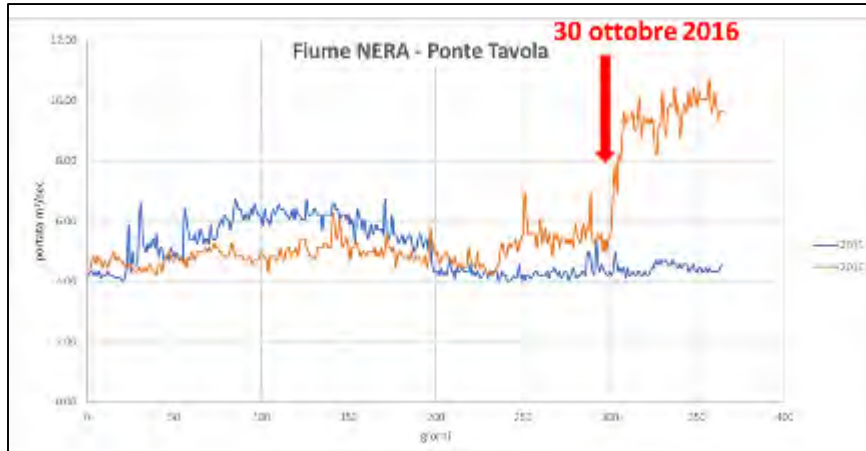


Eventi sismici

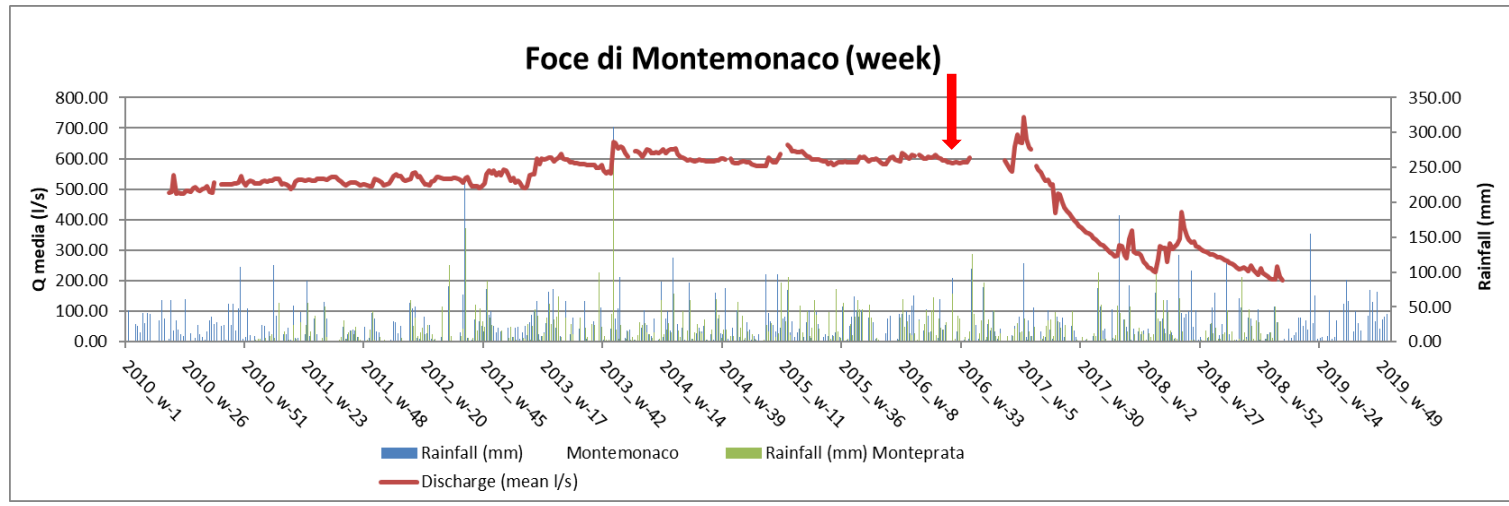
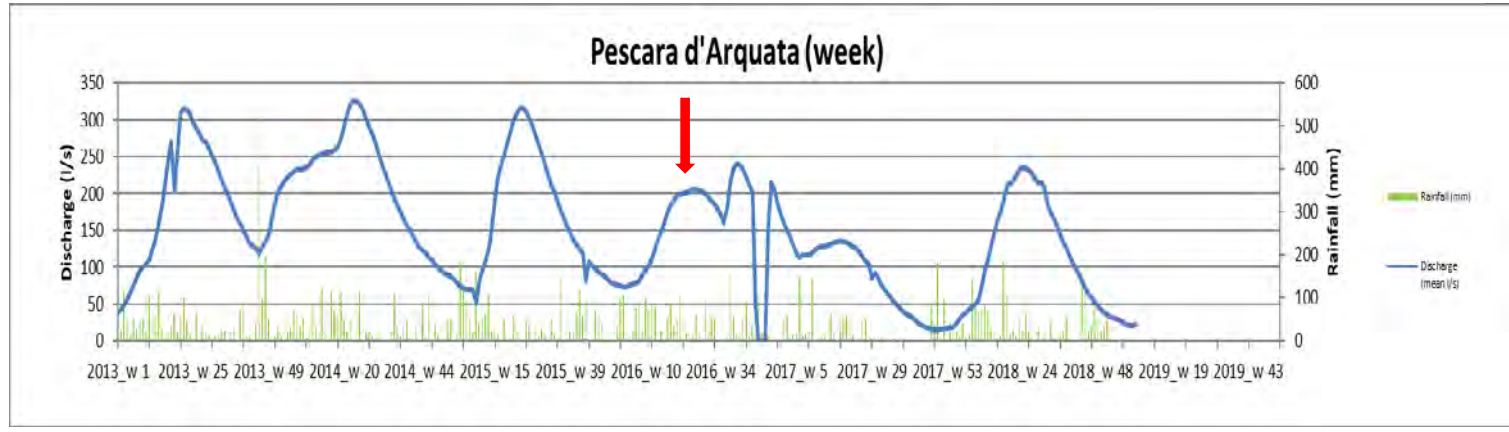
Nuove sorgenti - "Torbidone"



Variazioni di portata di corsi d'acqua



Variazioni di portata di sorgenti



MA QUESTE RISORSE SONO A RISCHIO ?

Inquinamento

(Acque superficiali e Campi Pozzi)

Eccessivo consumo

(Tutte le risorse)

Cambiamento climatico

(Tutte le risorse)



Eventi sismici



Pandemia ?

